



# rtc<sup>®</sup>

COUPLING TECHNOLOGY



# 104

rtc TYPE



**Temperature Range - Temperaturbereich**

Nitrile (N)	-20°C + 100°C (-4°F + 212°F)
FPM (V)	-20°C + 180°C (-4°F + 356°F)
EPDM (E)	-40°C + 150°C (-40°F + 302°F)
FFKM (W)	0°C +270°C (+23°F +518°F)

**Flow size - Nennweiten**

rtc 104.04	4 mm
rtc 104.06	6 mm
rtc 104.08	8 mm
rtc 104.10	10 mm
rtc 104.12	12 mm
rtc 104.15	15 mm
rtc 104.20	20 mm
rtc 104.25	25 mm
rtc 104.32	32 mm
rtc 104.37	37 mm
rtc 104.50	50 mm
rtc 104.75	75 mm

**Using Area**

- On temperature regulation applications with hot or cold water, oil etc.
- Injection moulding industries.
- On steam line.

**Anwendungsbereiche**

- Werkzeugtemperierung
- Kühlung mit Öl oder Wasser
- Kunststoffindustrie
- Dampfanwendungen

**Standart Version - Standardversion**

Fluorocarbone - FPM (V)

**Materials**

**Standart Type 104.04 to 104.20**

Body of sockets in high resistance stainless steel  
Shut-off valve of body in brass nickel plated  
Absperr-Ventil in Messing vernickelt

Body of plugs in high resistance stainless steel  
Shut-off valve of plug in brass nickel plated  
Absperr-Ventil des Nippels Messing vernickelt

**Standart Type 104.32 to 104.75**

Body of sockets, shut-off valve and back adaptors in brass nickel plated  
Grundkörper der Kupplung, Absperr-Ventil in Messing vernickelt

Body of plugs and back adaptors shut-off valve off socket in high resistance stainless steel  
Grundkörper des Nippels, Absperr-Ventil in widerstandsfähigem Edelstahl

**HP - Type 104.04 to 104.25**

Body of sockets and shut-off valve in high resistance stainless steel  
Grundkörper der Kupplung aus widerstandsfähigem Edelstahl

Body of plugs and back adaptors in high resistance stainless steel  
Grundkörper des Nippels aus widerstandsfähigem Edelstahl

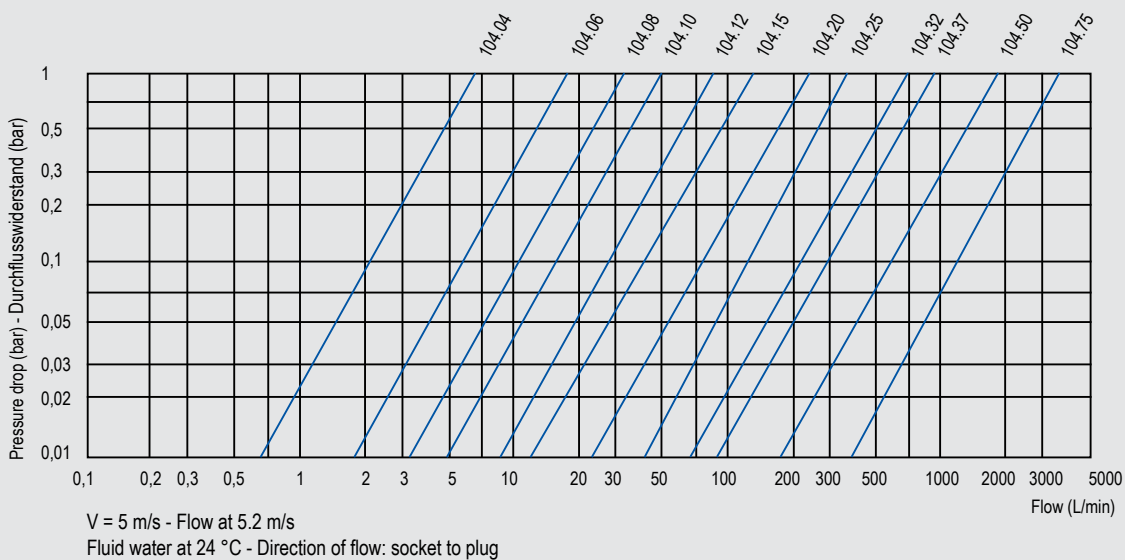




		104.04	104.06	104.08	104.10	104.12	104.15	104.20	104.25
Nominal Diameter	(mm)	4	6	8	10	12	15	20	25
Max. Working Pressure	Standard Version (bar)	160	160	160	160	160	160	160	160
	HP Version (bar)	500	500	500	500	250	250	250	250
Data at 5 m/s	Water Flow (L / min)	3,80	8,50	15,10	23,70	33,95	53	94,3	147,3
	Pressure Drop (bar)	0,320	0,230	0,220	0,190	0,160	0,180	0,160	0,150
Cv		0,45	1,24	2,25	3,75	5,85	8,70	16,50	25,20
Compressed Air Flow Upstream Pressure 6 Bar, $\Delta p = 0,3$ Bar	(Nm <sup>3</sup> / h)	16,1	43,5	80	125	211	310	577	938
Socket / Plug Repulsion Cross Section	(cm <sup>2</sup> )	0,90	1,55	2,15	3,40	4,50	6,80	11,35	17,4
Connecting Force Without Pressure	(N)	80	126	165	185	210	261	328	360
Min. Compensation Volume (cm <sup>3</sup> )	Socket	0,8	1,5	2,1	3,3	5,6	9,8	17,2	30,5
	Plug	0,4	0,8	1,4	2,2	4,1	7,5	14	27,03
Loss Of Fluid (2) (Water) For One Disconnection Under Pressure 2,5 Bar	(cm <sup>3</sup> )	0,0035	0,0100	0,0116	0,0150	0,0200	0,0210	0,0230	0,0780

		104.32	104.37	104.50	104.75
Standard Version					
Nominal Diameter	(mm)	32	37	50	75
Max. Working Pressure	(bar)	100	16	16	10
Data at 5 m/s	Water Flow (L / min)	248,5	332,5	589,05	1325
	Pressure Drop (bar)	0,145	0,135	0,112	0,120
Cv		50,2	66,51	115,05	237
Compressed Air Flow Upstream Pressure 6 Bar, $\Delta p = 0,3$ Bar	(Nm <sup>3</sup> / h)	1840	2450	4210	8500
Connecting Force Without Pressure	(N)	400	460	700	900
Socket / Plug Repulsion Cross Section	(cm <sup>2</sup> )	23,5	31,2	56,8	125
Min. Compensation Volume (cm <sup>3</sup> )	Socket	68,5	91,5	206,7	491
	Plug	58,6	77,5	178,6	405

Flow Rate vs Pressure Drop Graph / Durchflussrate vs Druckabfall



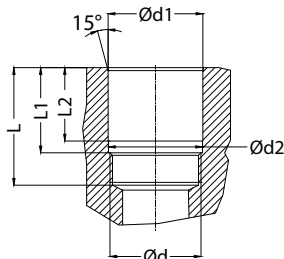
**104**  
rtc TYPE



104 MP Serie Direct Assembling Sockets (Montage dimension) Kupplung für Direkteinbau mit Aussengewinde (Einbaumaße)

TYPE 104 **rtc**

Socket / Kupplung



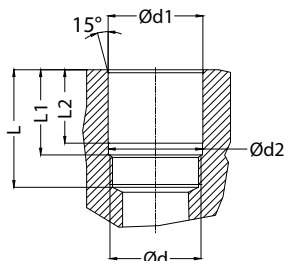
Body Size Größe	Connection Anschluss (Ød)	Ød1 G8	Ød2 F8	L + 0.1	L1 + 0.1	L2 + 0.1
04	M20x1.5	21	20.5	42	33	26
06	M24x1.5	25	24.5	42	33	26
08	M27x1.5	28	27.5	45	33	27
10	M27x1.5	28	27.5	45	33	27
12	M36x1.5	37	36.5	53	33	27
15	M42x1.5	43	42.5	64	43	36
20	M52x2.0	54	53	70	46	39
25	M64x2.0	66	65	92	64	54.5



104 MP Serie Direct Assembling Plugs (Montage dimension) Nippel für Direkteinbau mit Aussengewinde (Einbaumaße)

TYPE 104 **rtc**

Plug / Nippel



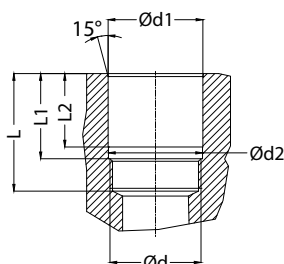
Body Size Größe	Connection Anschluss (Ød)	Ød1 G8	Ød2 F8	L + 0.1	L1 + 0.1	L2 + 0.1
04	M20x1.5	21	20.5	38	28	21.5
06	M24x1.5	25	24.5	38	28	21.5
08	M27x1.5	28	27.5	40	28	21.5
10	M27x1.5	28	27.5	40	28	21.5
12	M36x1.5	37	36.5	48	28	21.5
15	M42x1.5	43	42.5	59	38	31.5
20	M52x2.0	54	53	67	42	35
25	M64x2.0	66	65	88	60	50



Standart Serie Direct Assembling Sockets (Montage dimension) - Standart Kupplung für Direkteinbau mit Aussengewinde (Einbaumaße)

TYPE 104 **rtc**

Socket / Kupplung



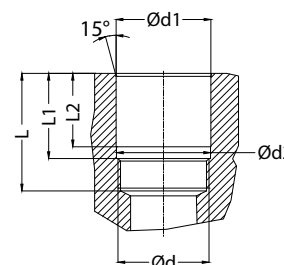
Body Size Größe	Connection Anschluss (Ød)	Ød1 G8	Ød2 F8	L + 0.1	L1 + 0.1	L2 + 0.1
04	M20x1.5	21	20.5	30	21	14
06	M24x1.5	25	24.5	30	21	14
08	M27x1.5	28	27.5	33	21	15
10	M27x1.5	28	27.5	33	21	15
12	M36x1.5	37	36.5	41	21	15
15	M42x1.5	43	42.5	52	31	24
20	M52x2.0	54	53	58	34	27
25	M64x2.0	66	65	80	52	42.5



Standart Serie Direct Assembling Plugs (Montage dimension) - Standart Nippel für Direkteinbau mit Aussengewinde (Einbaumaße)

TYPE 104 **rtc**

Plug / Nippel



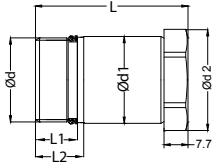
Body Size Größe	Connection Anschluss (Ød)	Ød1 G8	Ød2 F8	L + 0.1	L1 + 0.1	L2 + 0.1
04	M20x1.5	21	20.5	26	16	9.5
06	M24x1.5	25	24.5	26	16	9.5
08	M27x1.5	28	27.5	28	16	9.5
10	M27x1.5	28	27.5	28	16	9.5
12	M36x1.5	37	36.5	36	16	9.5
15	M42x1.5	43	42.5	47	26	19.5
20	M52x2.0	54	53	55	30	23
25	M64x2.0	66	65	76	48	38

**rtc** TYPE 104 MP

Male thread socket / Kupplung mit Aussengewinde



Socket / Kupplung



104 MP Serie Direct Assembling Sockets  
Kupplung für Direkteinbau

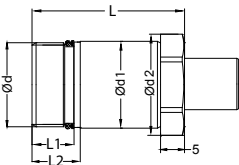
Order No / Bestellnr.	Body Size Größe	Connection Anschluss (Ød)	Ød1	Ød2	L	L1	L2	HEX.
104.04 SMB 2015 MP	04	M20x1.5	21	25	47	11.5	14	22
104.06 SMB 2415 MP	06	M24x1.5	25	29	47	11.5	14	26
104.08 SMB 2715 MP	08	M27x1.5	28	33	49	13.5	16	29
104.10 SMB 2715 MP	10	M27x1.5	28	33	49	13.5	16	29
104.12 SMB 3615 MP	12	M36x1.5	37	42	57	21.5	24	38
104.15 SMB 4215 MP	15	M42x1.5	43	47	68	22.5	25	42
104.20 SMB 5220 MP	20	M52x2.0	54	62	74.5	25.5	28.5	50
104.25 SMB 6420 MP	25	M64x2.0	66	75	96.5	32	36	55
104.32 SMB 7220 MP	32	M72x2.0	76	82	100	36	41	75

**rtc** TYPE 104 MP

Male thread plug / Nippel mit Aussengewinde



Plugs / Nippel



104 MP Serie Direct Assembling Plugs  
Nippel für Direkteinbau

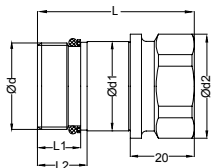
Order No / Bestellnr.	Body Size Größe	Connection Anschluss (Ød)	Ød1	Ød2	L	L1	L2	HEX.
104.04 PMB 2015 MP	04	M20x1.5	21	25	40	11.5	14	22
104.06 PMB 2415 MP	06	M24x1.5	25	29	40	11.5	14	26
104.08 PMB 2715 MP	08	M27x1.5	28	33	42	13.5	16	29
104.10 PMB 2715 MP	10	M27x1.5	28	33	42	13.5	16	29
104.12 PMB 3615 MP	12	M36x1.5	37	42	50	21.5	24	38
104.15 PMB 4215 MP	15	M42x1.5	43	47	61	22.5	25	42
104.20 PMB 5220 MP	20	M52x2.0	54	62	67.5	25.5	28.5	50
104.25 PMB 6420 MP	25	M64x2.0	66	75	89.5	32	36	55
104.32 PMB 7220 MP	32	M72x2.0	76	82	78	36	41	75

**rtc** TYPE 104

Male thread socket / Kupplung mit Aussengewinde



Socket / Kupplung



104 Serie Direct Assembling Sockets  
Kupplung für Direkteinbau

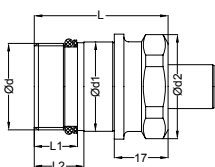
Order No / Bestellnr.	Body Size Größe	Connection Anschluss (Ød)	Ød1	Ød2	L	L1	L2	HEX.
104.04 SMB 2015	04	M20x1.5	21	25	47	11.5	14	22
104.06 SMB 2415	06	M24x1.5	25	29	47	11.5	14	26
104.08 SMB 2715	08	M27x1.5	28	33	49	13.5	16	29
104.10 SMB 2715	10	M27x1.5	28	33	49	13.5	16	29
104.12 SMB 3615	12	M36x1.5	37	42	57	21.5	24	38
104.15 SMB 4215	15	M42x1.5	43	47	68	22.5	25	42
104.20 SMB 5220	20	M52x2.0	54	62	74.5	25.5	28.5	50
104.25 SMB 6420	25	M64x2.0	66	75	96.5	32	36	55
104.32 SMB 7220	32	M72x2.0	76	82	100	36	41	75

**rtc** TYPE 104

Male thread plug / Nippel mit Aussengewinde



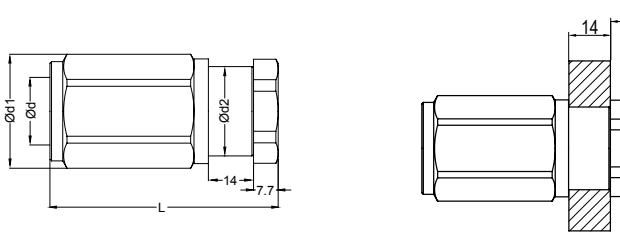
Plugs / Nippel



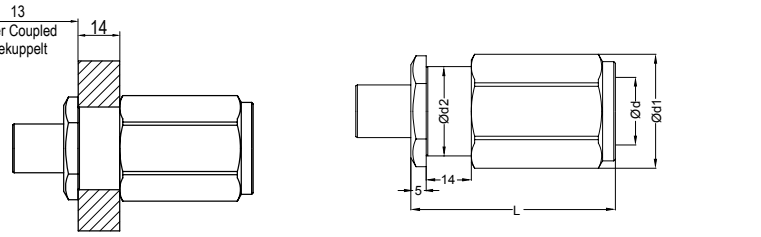
104 Serie Direct Assembling Plugs  
Nippel für Direkteinbau

Order No / Bestellnr.	Body Size Größe	Connection Anschluss (Ød)	Ød1	Ød2	L	L1	L2	HEX.
104.04 PMB 2015	04	M20x1.5	21	25	40	11.5	14	22
104.06 PMB 2415	06	M24x1.5	25	29	40	11.5	14	26
104.08 PMB 2715	08	M27x1.5	28	33	42	13.5	16	29
104.10 PMB 2715	10	M27x1.5	28	33	42	13.5	16	29
104.12 PMB 3615	12	M36x1.5	37	42	50	21.5	24	38
104.15 PMB 4215	15	M42x1.5	43	47	61	22.5	25	42
104.20 PMB 5220	20	M52x2.0	54	62	67.5	25.5	28.5	50
104.25 PMB 6420	25	M64x2.0	66	75	89.5	32	36	55
104.32 PMB 7220	32	M72x2.0	76	82	78	36	41	75

**rtc** TYPE 104 MP Socket / Kupplung



**rtc** TYPE 104 MP Plugs / Nippel



104.04 MP	Body Size	Connection	Ød1	Ød2	L	HEX.
Order No / Bestellnr.	Größe	Anschluss (Ød)				
104.04 SFB 13 MP	04	BSP 1/4	25	21	47	22
104.04 SQB 13 MP	04	BSPT 1/4	25	21	47	22
104.04 SNB 13 MP	04	NPT 1/4	25	21	47	22
104.04 SUB 1120 MP	04	UNF 7/16-20	25	21	47	22

104.04 MP	Body Size	Connection	Ød1	Ød2	L	HEX.
Order No / Bestellnr.	Größe	Anschluss (Ød)				
104.04 PFB 13 MP	04	BSP 1/4	25	21	58	22
104.04 PQB 13 MP	04	BSPT 1/4	25	21	58	22
104.04 PNB 13 MP	04	NPT 1/4	25	21	58	22
104.04 PUB 1120 MP	04	UNF 7/16-20	25	21	58	22

104.06 MP	Body Size	Connection	Ød1	Ød2	L	HEX.
Order No / Bestellnr.	Größe	Anschluss (Ød)				
104.06 SFB 17 MP	06	BSP 3/8	29	25	66.5	26
104.06 SQB 17 MP	06	BSPT 3/8	29	25	66.5	26
104.06 SNB 17 MP	06	NPT 3/8	29	25	66.5	26
104.06 SUB 1418 MP	06	UNF 9/16-18	29	25	66.5	26

104.06 MP	Body Size	Connection	Ød1	Ød2	L	HEX.
Order No / Bestellnr.	Größe	Anschluss (Ød)				
104.06 PFB 17 MP	06	BSP 3/8	29	25	59.5	26
104.06 PQB 17 MP	06	BSPT 3/8	29	25	59.5	26
104.06 PNB 17 MP	06	NPT 3/8	29	25	59.5	26
104.06 PUB 1418 MP	06	UNF 9/16-18	29	25	59.5	26

104.08 MP	Body Size	Connection	Ød1	Ød2	L	HEX.
Order No / Bestellnr.	Größe	Anschluss (Ød)				
104.08 SFB 21 MP	08	BSP 1/2	32.5	28	72.5	30
104.08 SQB 21 MP	08	BSPT 1/2	32.5	28	72.5	30
104.08 SNB 21 MP	08	NPT 1/2	32.5	28	72.5	30
104.08 SUB 1418 MP	08	UNF 9/16-18	32.5	28	72.5	30

104.08 MP	Body Size	Connection	Ød1	Ød2	L	HEX.
Order No / Bestellnr.	Größe	Anschluss (Ød)				
104.08 PFB 21 MP	08	BSP 1/2	33	28	64	30
104.08 PQB 21 MP	08	BSPT 1/2	33	28	64	30
104.08 PNB 21 MP	08	NPT 1/2	33	28	64	30
104.08 PUB 1418 MP	08	UNF 9/16-18	33	28	64	30

104.10 MP	Body Size	Connection	Ød1	Ød2	L	HEX.
Order No / Bestellnr.	Größe	Anschluss (Ød)				
104.10 SFB 21 MP	10	BSP 1/2	32.5	28	72.5	30
104.10 SQB 21 MP	10	BSPT 1/2	32.5	28	72.5	30
104.10 SNB 21 MP	10	NPT 1/2	32.5	28	72.5	30
104.10 SUB 1418 MP	10	UNF 9/16-18	32.5	28	72.5	30

104.10 MP	Body Size	Connection	Ød1	Ød2	L	HEX.
Order No / Bestellnr.	Größe	Anschluss (Ød)				
104.10 PFB 21 MP	10	BSP 1/2	33	28	64	30
104.10 PQB 21 MP	10	BSPT 1/2	33	28	64	30
104.10 PNB 21 MP	10	NPT 1/2	33	28	64	30
104.10 PUB 1418 MP	10	UNF 9/16-18	33	28	64	30

104.12 MP	Body Size	Connection	Ød1	Ød2	L	HEX.
Order No / Bestellnr.	Größe	Anschluss (Ød)				
104.12 SFB 26 MP	12	BSP 3/4	42	37	83	38
104.12 SQB 26 MP	12	BSPT 3/4	42	37	83	38
104.12 SNB 26 MP	12	NPT 3/4	42	37	83	38
104.12 SUB 2214 MP	12	UNF 7/8-14	42	37	83	38

104.12 MP	Body Size	Connection	Ød1	Ød2	L	HEX.
Order No / Bestellnr.	Größe	Anschluss (Ød)				
104.12 PFB 26 MP	12	BSP 3/4	42	37	75.5	38
104.12 PQB 26 MP	12	BSPT 3/4	42	37	75.5	38
104.12 PNB 26 MP	12	NPT 3/4	42	37	75.5	38
104.12 PUB 2214 MP	12	UNF 7/8-14	42	37	75.5	38

104.15 MP	Body Size	Connection	Ød1	Ød2	L	HEX.
Order No / Bestellnr.	Größe	Anschluss (Ød)				
104.15 SFB 26 MP	15	BSP 3/4	47	43	93	44
104.15 SQB 26 MP	15	BSPT 3/4	47	43	93	44
104.15 SNB 26 MP	15	NPT 3/4	47	43	93	44
104.15 SUB 2712 MP	15	UNF 1-1/16-12	47	43	93	44

104.15 MP	Body Size	Connection	Ød1	Ød2	L	HEX.
Order No / Bestellnr.	Größe	Anschluss (Ød)				
104.15 PFB 26 MP	15	BSP 3/4	47	43	86	44
104.15 PQB 26 MP	15	BSPT 3/4	47	43	86	44
104.15 PNB 26 MP	15	NPT 3/4	47	43	86	44
104.15 PUB 2712 MP	15	UNF 1-1/16-12	47	43	86	44

104.20 MP	Body Size	Connection	Ød1	Ød2	L	HEX.
Order No / Bestellnr.	Größe	Anschluss (Ød)				
104.20 SFB 33 MP	20	BSP 1	62	54	106	55
104.20 SQB 33 MP	20	BSPT 1	62	54	106	55
104.20 SNB 33 MP	20	NPT 1	62	54	106	55
104.20 SUB 3312 MP	20	UNF 1-5/16-12	62	54	106	55

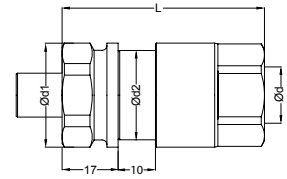
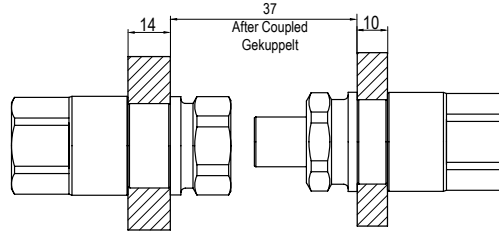
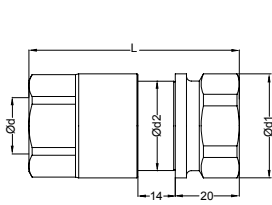
104.20 MP	Body Size	Connection	Ød1	Ød2	L	HEX.
Order No / Bestellnr.	Größe	Anschluss (Ød)				
104.20 PFB 33 MP	20	BSP 1	62	54	99	55
104.20 PQB 33 MP	20	BSPT 1	62	54	99	55
104.20 PNB 33 MP	20	NPT 1	62	54	99	55
104.20 PUB 3312 MP	20	UNF 1-5/16-12	62	54	99	55

104.25 MP	Body Size	Connection	Ød1	Ød2	L	HEX.
Order No / Bestellnr.	Größe	Anschluss (Ød)				
104.25 SFB 42 MP	25	BSP 1-1/4	75	66	112.5	65
104.25 SQB 42 MP	25	BSPT 1-1/4	75	66	112.5	65
104.25 SNB 42 MP	25	NPT 1-1/4	75	66	112.5	65
104.25 SUB 4212 MP	25	UNF 1-5/8-12	75	66	112.5	65

104.25 MP	Body Size	Connection	Ød1	Ød2	L	HEX.
Order No / Bestellnr.	Größe	Anschluss (Ød)				
104.25 PFB 42 MP	25	BSP 1-1/4	75	66	121	65
104.25 PQB 42 MP	25	BSPT 1-1/4	75	66	121	65
104.25 PNB 42 MP	25	NPT 1-1/4	75	66	121	65
104.25 PUB 4212 MP	25	UNF 1-5/8-12	75	66	121	65

rtc TYPE 104

Socket / Kupplung



rtc TYPE 104

Plugs / Nippel



104.04	Body Size	Connection	Ød1	Ød2	L	HEX.
Order No / Bestellnr.	Größe	Anschluss (Ød)				
104.04 SFB 13	04	BSP 1/4	25	21	65	22
104.04 SQB 13	04	BSPT 1/4	25	21	65	22
104.04 SNB 13	04	NPT 1/4	25	21	65	22
104.04 SUB 1120	04	UNF 7/16-20	25	21	65	22

104.04	Body Size	Connection	Ød1	Ød2	L	HEX.
Order No / Bestellnr.	Größe	Anschluss (Ød)				
104.04 PFB 13	04	BSP 1/4	25	21	58	22
104.04 PQB 13	04	BSPT 1/4	25	21	58	22
104.04 PNB 13	04	NPT 1/4	25	21	58	22
104.04 PUB 1120	04	UNF 7/16-20	25	21	58	22

104.06	Body Size	Connection	Ød1	Ød2	L	HEX.
Order No / Bestellnr.	Größe	Anschluss (Ød)				
104.06 SFB 17	06	BSP 3/8	29	25	66.5	26
104.06 SQB 17	06	BSPT 3/8	29	25	66.5	26
104.06 SNB 17	06	NPT 3/8	29	25	66.5	26
104.06 SUB 1418	06	UNF 9/16-18	29	25	66.5	26

104.06	Body Size	Connection	Ød1	Ød2	L	HEX.
Order No / Bestellnr.	Größe	Anschluss (Ød)				
104.06 PFB 17	06	BSP 3/8	29	25	59.5	26
104.06 PQB 17	06	BSPT 3/8	29	25	59.5	26
104.06 PNB 17	06	NPT 3/8	29	25	59.5	26
104.06 PUB 1418	06	UNF 9/16-18	29	25	59.5	26

104.08	Body Size	Connection	Ød1	Ød2	L	HEX.
Order No / Bestellnr.	Größe	Anschluss (Ød)				
104.08 SFB 21	08	BSP 1/2	33	28	71.5	29
104.08 SQB 21	08	BSPT 1/2	33	28	71.5	29
104.08 SNB 21	08	NPT 1/2	33	28	71.5	29
104.08 SUB 1418	08	UNF 9/16-18	33	28	71.5	29

104.08	Body Size	Connection	Ød1	Ød2	L	HEX.
Order No / Bestellnr.	Größe	Anschluss (Ød)				
104.08 PFB 21	08	BSP 1/2	33	28	65.5	29
104.08 PQB 21	08	BSPT 1/2	33	28	65.5	29
104.08 PNB 21	08	NPT 1/2	33	28	65.5	29
104.08 PUB 1418	08	UNF 9/16-18	33	28	65.5	29

104.10	Body Size	Connection	Ød1	Ød2	L	HEX.
Order No / Bestellnr.	Größe	Anschluss (Ød)				
104.10 SFB 21	10	BSP 1/2	33	28	71.5	29
104.10 SQB 21	10	BSPT 1/2	33	28	71.5	29
104.10 SNB 21	10	NPT 1/2	33	28	71.5	29
104.10 SUB 1418	10	UNF 9/16-18	33	28	71.5	29

104.10	Body Size	Connection	Ød1	Ød2	L	HEX.
Order No / Bestellnr.	Größe	Anschluss (Ød)				
104.10 PFB 21	10	BSP 1/2	33	28	65.5	29
104.10 PQB 21	10	BSPT 1/2	33	28	65.5	29
104.10 PNB 21	10	NPT 1/2	33	28	65.5	29
104.10 PUB 1418	10	UNF 9/16-18	33	28	65.5	29

104.12	Body Size	Connection	Ød1	Ød2	L	HEX.
Order No / Bestellnr.	Größe	Anschluss (Ød)				
104.12 SFB 26	12	BSP 3/4	42	37	82.5	38
104.12 SQB 26	12	BSPT 3/4	42	37	82.5	38
104.12 SNB 26	12	NPT 3/4	42	37	82.5	38
104.12 SUB 2214	12	UNF 7/8-14	42	37	82.5	38

104.12	Body Size	Connection	Ød1	Ød2	L	HEX.
Order No / Bestellnr.	Größe	Anschluss (Ød)				
104.12 PFB 26	12	BSP 3/4	42	37	75.5	38
104.12 PQB 26	12	BSPT 3/4	42	37	75.5	38
104.12 PNB 26	12	NPT 3/4	42	37	75.5	38
104.12 PUB 2214	12	UNF 7/8-14	42	37	75.5	38

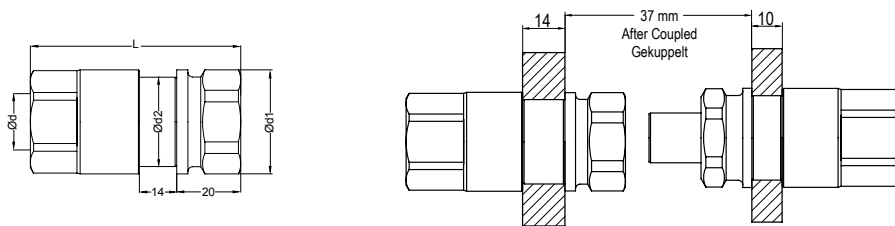
104.15	Body Size	Connection	Ød1	Ød2	L	HEX.
Order No / Bestellnr.	Größe	Anschluss (Ød)				
104.15 SFB 26	15	BSP 3/4	50	43	93	42
104.15 SQB 26	15	BSPT 3/4	50	43	93	42
104.15 SNB 26	15	NPT 3/4	50	43	93	42
104.15 SUB 2712	15	UNF 1-1/16-12	50	43	93	42

104.15	Body Size	Connection	Ød1	Ød2	L	HEX.
Order No / Bestellnr.	Größe	Anschluss (Ød)				
104.15 PFB 26	15	BSP 3/4	50	43	86	42
104.15 PQB 26	15	BSPT 3/4	50	43	86	42
104.15 PNB 26	15	NPT 3/4	50	43	86	42
104.15 PUB 2712	15	UNF 1-1/16-12	50	43	86	42

104.20	Body Size	Connection	Ød1	Ød2	L	HEX.
Order No / Bestellnr.	Größe	Anschluss (Ød)				
104.20 SFB 33	20	BSP 1	62	54	106	55
104.20 SQB 33	20	BSPT 1	62	54	106	55
104.20 SNB 33	20	NPT 1	62	54	106	55
104.20 SUB 3312	20	UNF 1-5/16-12	62	54	106	55

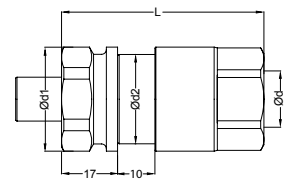
104.20	Body Size	Connection	Ød1	Ød2	L	HEX.
Order No / Bestellnr.	Größe	Anschluss (Ød)				
104.20 PFB 33	20	BSP 1	62	54	99	55
104.20 PQB 33	20	BSPT 1	62	54	99	55
104.20 PNB 33	20	NPT 1	62	54	99	55
104.20 PUB 3312	20	UNF 1-5/16-12	62	54	99	55

rtc TYPE 104 Socket / Kupplung



104.25	Body Size	Connection	Ød1	Ød2	L	HEX.
Order No / Bestellnr.	Größe	Anschluss (Ød)				
104.25 SFB 42	25	BSP 1-1/4	75	66	128	65
104.25 SQB 42	25	BSPT 1-1/4	75	66	128	65
104.25 SNB 42	25	NPT 1-1/4	75	66	128	65
104.25 SUB 4212	25	UNF 1-5/8-12	75	66	128	65

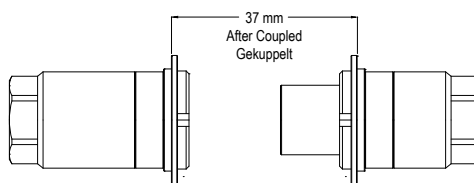
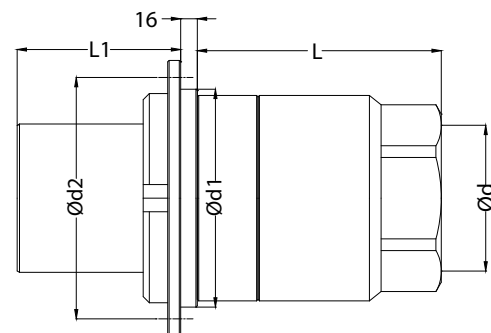
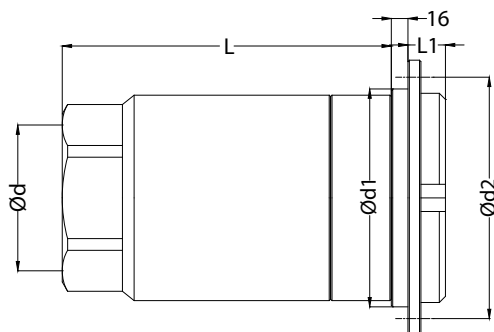
rtc TYPE 104 Plugs / Nippel



104.25	Body Size	Connection	Ød1	Ød2	L	HEX.
Order No / Bestellnr.	Größe	Anschluss (Ød)				
104.25 PFB 42	25	BSP 1-1/4	75	66	121	65
104.25 PQB 42	25	BSPT 1-1/4	75	66	121	65
104.25 PNB 42	25	NPT 1-1/4	75	66	121	65
104.25 PUB 4212	25	UNF 1-5/8-12	75	66	121	65

104.32	Body Size	Connection	Ød1	Ød2	L	HEX.
Order No / Bestellnr.	Größe	Anschluss (Ød)				
104.32 SFB 42	32	BSP 1-1/4	82	76	135.5	75
104.32 SQB 42	32	BSPT 1-1/4	82	76	135.5	75
104.32 SNB 42	32	NPT 1-1/4	82	76	135.5	75
104.32 SUB 4212	32	UNF 1-5/8-12	82	76	135.5	75

104.32	Body Size	Connection	Ød1	Ød2	L	HEX.
Order No / Bestellnr.	Größe	Anschluss (Ød)				
104.32 PFB 42	32	BSP 1-1/4	82	76	113.5	75
104.32 PQB 42	32	BSPT 1-1/4	82	76	113.5	75
104.32 PNB 42	32	NPT 1-1/4	82	76	113.5	75
104.32 PUB 4212	32	UNF 1-5/8-12	82	76	113.5	75



104.37	Body Size	Connection	Ød1	Ød2	L	L1	HEX.
Order No / Bestellnr.	Größe	Anschluss (Ød)					
104.37 SFB 48	37	BSP 1-1/2	96	108	151	20	75
104.37 SNB 48	37	NPT 1-1/2	96	108	151	20	75

104.37	Body Size	Connection	Ød1	Ød2	L	L1	HEX.
Order No / Bestellnr.	Größe	Anschluss (Ød)					
104.37 PFB 48	37	BSP 1-1/2	96	108	147	72	75
104.37 PNB 48	37	NPT 1-1/2	96	108	147	72	75

104.50	Body Size	Connection	Ød1	Ød2	L	L1	HEX.
Order No / Bestellnr.	Größe	Anschluss (Ød)					
104.50 SFB 60	50	BSP 2	124	136	174	20	90
104.50 SNB 60	50	NPT 2	124	136	174	20	90

104.50	Body Size	Connection	Ød1	Ød2	L	L1	HEX.
Order No / Bestellnr.	Größe	Anschluss (Ød)					
104.50 PFB 60	50	BSP 2	124	136	170	86	90
104.50 PNB 60	50	NPT 2	124	136	170	86	90

104.75	Body Size	Connection	Ød1	Ød2	L	L1	HEX.
Order No / Bestellnr.	Größe	Anschluss (Ød)					
104.75 SFB 88	75	BSP 3	171	183	232	20	120
104.75 SNB 88	75	NPT 3	171	183	232	20	120

104.75	Body Size	Connection	Ød1	Ød2	L	L1	HEX.
Order No / Bestellnr.	Größe	Anschluss (Ød)					
104.75 PFB 88	75	BSP 3	171	183	228	121	120
104.75 PNB 88	75	NPT 3	171	183	228	121	120